

DiALTA Di 251 (f) / Di 351 (f)

Copier specifications

Copier system

Laser electrostatic

Type

Console/stationary platen

Resolution

600 x 600 dpi

Halftones

256 gradations

Type of originals

Sheets, book, 3-D objects

Original size

Max. A3

Copy size

A3 to A6

Copy speed

25 copies/min.: Di251 (f)

35 copies/min.: Di351 (f)

1st copy

Less than 5.8 sec.: Di251 (f)

Less than 4.6 sec.: Di351 (f)

Duplex

Option Di251 (f)

Standard Di351 (f)

Memory

32 MB standard (120 pages*)

Max. 64 MB (280 pages*)

Exposure control

Automatic, manual & photo

Paper feeding system

2 front-loading paper drawers
(250-sheet + 500-sheet)

* at 3% coverage

Sheet bypass

Single sheet bypass

Multiple copy

1-99 for Di251 (f)

1-999 for Di351 (f)

Input materials

Plain paper (60-90g/m²)

Manual feed (up to 160g/m²)

Warm-up time

Less than 60 sec. for Di251 (f)

Less than 70 sec. for Di351 (f)

Magnification

0.25-4.00 (in 0.1% steps)

Developing system

I/C system

Photo conductor

OPC drum

Power consumption

850 W (Di251 (f))

1,050 W (Di351 (f))

Dimensions (W x D x H, mm)

566 x 707 x 635 for Di251 (f)

616 x 707 x 635 for Di351 (f)

Weight

59 kg for Di251 (f)

60 kg for Di351 (f)

Accessories

- 70-sheet automatic document feeder (AF-9)
- 50-sheet automatic duplex feeder (AFR-17)
- 1,250-sheet finisher (FN-110)
- 3,250-sheet finisher (FN-109)
- 3rd tray (JS-100)
- Mailbin finisher (FN-504)
- 2-bin tray (JS-200/JS-201)
- Shift tray (OT-100) only for Di251 (f)
- 2,500-sheet large capacity cassette (PF-117)
- 500-sheet universal paper cassette (PF-118)
- 500-sheet fixed paper cassette (PF-119)

Printer specifications

Print speed

• 25 ppm (A4 crosswise, simplex, multi-printing) for Di251 (f)

• 35 ppm (A4 crosswise, simplex, multi-printing) for Di351 (f)

Resolution

600 x 600 dpi

Paper size

A3-A6

Commands

PCL 5e, PCL6 (standard)

PostScript 3 (option)

Interface

IEEE-1284, Ethernet Network Card

Memory

16 MB standard

Max. 144 MB

Support operation system

Windows 95, 98, 2000,

Windows NT 4.0,

Mac OS system 7.5.3 or later

Fax specifications

Min. transmission time

≤ 3 sec. (ITU No.1)

Max. modem speed

33.6 kbps

Coding

MH, MR, MMR, JBIG

Scan resolution

Max. 400 x 400 dpi

Compatibility

G3/Super G3

Memory capacity in fax mode

1,400/max. 2,000 pages

Halftones

256 gradations

Max. numbers stored

500

One-touch/speed-dial numbers

Max. 300 (out of 500 speed dial numbers)

Program keys

Max. 30 (out of 300 one-touch-keys)

Special features

- Broadcasting
- Batch transmission
- Closed network receiving
- Delayed transmission
- Mailbox receiving
- Memory receiving
- Quick memory transmission
- Polling
- Stamp function
- 2-to-1 transmission
- 2-sided transmission

Scan specifications

Scan speed

Up to 35 originals per minute

Scan modes

Scan-to-PC

Scan-to-FTP

Scan-to-e-mail

Scan resolution

600 x 600 dpi



Minolta does not warrant that any prices or specifications mentioned will be error-free.

Specifications are subject to change without notice.

All other brand and product names may be registered trademarks or trademarks of their respective holders and are hereby acknowledged.

Printed in UK on chlorine-free bleached paper.

Di251f/351f/v1/09-01

For further information please contact

DiALTA Di251(f)/Di351(f)

www.minolta.co.uk

The essentials of imaging



MINOLTA

Workgroup wizardry



DiALTA

DiALTA Di 251 (f) / Di 351 (f)

The new 5-in-1 office solution ...

If your office is crowded with machines like a separate copier, desktop printer, fax or scanner, you're probably well aware of the noise they make and the space they take up. Much ado about nothing?

Hardly, especially if you consider that all this hardware frequently has nothing but basic functions to offer.

Anyway, why should you pay extra for the print engine of a stand-alone printer when our digital copier can print as well?

And why should you spend money on a desktop fax when our digital copier can fax as well?

And why should you invest in a flatbed scanner when our digital copier offers a high-quality scanning function? After all, multitasking is common practice outside the office – do you listen to cassettes, CDs, DVDs and radio on your stereo? With the launch of the DiALTA Di251(f) and Di351(f), two new black-and-white digital multitasking devices, Minolta offers you the ultimate 5-in-1 office solution.

Copying

As many as 25 or 35 pages a minute respectively and various creative editing functions

Printing

As many as 25 or 35 pages a minute respectively from any workplace in your business

Faxing

High-speed transmission at 33.6 kbps

Scanning

High-quality scanning at 600 x 600 dpi via the document feeder or platen glass

E-mailing

Sending originals directly as e-mails with no need to attach them first



... with five big benefits

1 → **Productivity boosted**
The benefits of multifunctionality – copying, printing, faxing, scanning and e-mailing – do not come at the expense of performance. The new Di251(f) and Di351(f) give you 25 or 35 pages a minute, respectively, as digital copiers or printers plus the added benefit of functioning as fast workgroup faxes and productivity-boosting scanners.

2 → **Acquisition costs cut**
Either the Di251(f) or Di351(f) can provide your office a high-quality copier, high-speed printer, workgroup fax and document scanner. So as a one-off acquisition, they give you better value for money than four individual machines.

3 → **Running costs reduced**
The “hidden” cost per page of printing via a desktop printer is remarkably high. Have you ever calculated the total cost per page of a desktop printer’s consumables? Both the Di251(f) and Di351(f) offer the added bonus of printing at the significantly lower price per page of copying.

4 → **Single service partner**
Different service partners and consumables for your copying, printing and faxing? A troublesome and rather expensive idea. The intelligent solution is a single service partner and uniform consumables for all three functions.

5 → **Space saved**
As multifunctional digital systems, the Di251(f) and Di351(f) take up considerably less space than four individual stand-alone copiers, printers, scanners and fax machines would do.

Digital technology has opened the door to enhanced performance and productivity in today’s office environments. DiALTA, a word derived from *digital intelligence* and *lealtà* (which means loyalty in Italian), is the brand name for Minolta’s broad range of digital output devices. Both aspects of this brand name reflect Minolta’s devotion to the principle of customer satisfaction and desire to ensure maximum quality in reproducing images and in managing and transmitting data to computer-based networks.



Bring a quality copier into your workgroup

Copiers small enough for workgroup use are frequently far too slow and lack the more sophisticated functions needed in today's fast-moving business world. And a more powerful copier is usually situated too far away – down the corridor or at the other end of the office. But now Minolta offers you the ideal solution – a choice of two fast, functional, high-quality copiers designed for workgroup use: the 25-cpm DiALTA Di251(f) and the 35-cpm DiALTA Di351(f).

The latest generation of monochrome digital copiers from Minolta requires hardly any space and makes little or no noise – ideal qualities for workgroup use. At the same time, the machines' criss-cross sorting function makes bulky, add-on sorting units superfluous yet still ensures carefully sorted sets of copies. But space-saving speed is not everything. The Di251(f) and Di351(f) deliver the kind of crisp, clear copies only first-class image-reproduction technology can provide and with a whole host of tried-and-tested features, they are also extremely reliable machines.



convenience

→ **Ease of use**
 Large touch panel display with fewer buttons or keys and helpful user support functions plus user-replaceable consumables

→ **Efficient sorting**
 Sorts copies clearly in criss-cross fashion – just as you would by hand

→ **Less wastage**
 Recall function allows settings to be checked before producing multicopies, automatic image rotation ensures copies are produced the right way round following the automatic paper-source switch that occurs when paper in a cassette runs out

→ **Digital excellence**
 State-of-the-art image processing through electronic data transfer

→ **Image quality**
 High resolution (600 x 600 dpi) and 256 halftones for crisp, clear reproduction

productivity

→ **Voluminous paper input**
 Automatic document feeder for up to 70 sheets, max. paper input capacity of up to 3,750 sheets

→ **Time-saving output features**
 Finishing functionality for up to 3,250 sheets with online punching and stapling or five-bin-sorter for user-specific print-job separation

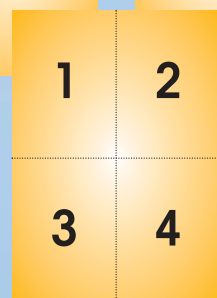
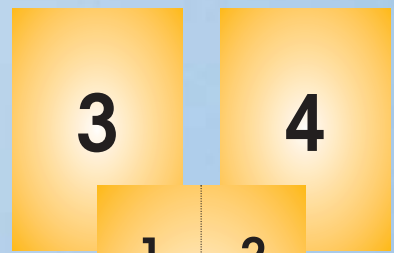
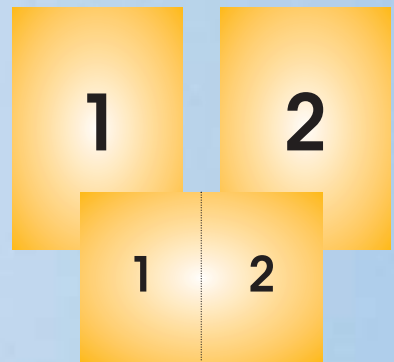
→ **Digital efficiency**
 “Scan once, copy many” function reduces operating time and wear and tear on machine

→ **Copy economy**
 Stackless duplex unit standard in Di357, optional in Di251

→ **Wide choice of formats**
 From A6 to A3 and up to 160 g/m² with 6-way paper loading

→ **Sophisticated scanning**
 Documents scanned separately, e.g. via the ADF and platen glass, and then merged for online finishing

flexibility



quality

Go for speed and sophistication in printing

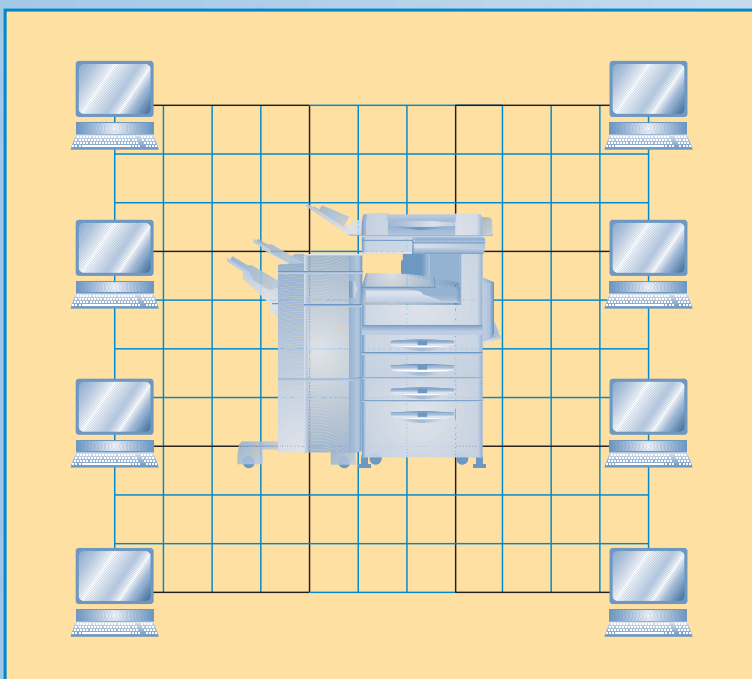
Are desktop printers really such a good idea in workgroup environments? You print a document on a basic desktop device but have to head for the nearest copier if you need numerous copies for a meeting. Besides, which desktop printer offers you features such as duplex, stapling or punching?

A vital advantage if your documents are to be well presented. To meet these needs, a digital copier-printer such as the new Di251(f) or Di351(f) from Minolta is a much more sensible solution.

These new monochrome machines are specifically designed to meet a workgroup's needs, not only providing fast output (25 or 35 ppm) but also offering numerous useful special functions. In a workgroup environment the advantages are obvious.

You can print all the document sets you need fast and enjoy all the finishing and image-processing functions you want, e.g. punching, stapling, sorting, duplex, A3 printing, 2-in-1 or 4-in-1 processing.

So you get a workgroup printer with all the sophisticated features of a digital copier.





→ **Lower costs**

Printing at the cost per page of copying – much cheaper than desktop printers

→ **Network management**

New version of Minolta's PageScope software for easier administration of a networked environment

→ **Reduced network data transfer**

Numerous pre-installed PostScript and PCL fonts and an extra HDD for storing additional fonts

→ **User-friendly output**

Mailbin sorters with five output bins for job-specific sorting – ideal for workgroup environments

→ **Crisp, clear reproduction**

Perfect images, text and graphics through standard PCL 6 and PostScript 3

→ **Image quality**

High resolution (600 x 600 dpi) and 256 halftones

productivity

→ **Time-saving speed**

The processing power to deliver 25 or 35 pages per minute, respectively

→ **Efficient document production**

"Transmit once, print many" function saves time as well as PC and network resources

→ **Networkability**

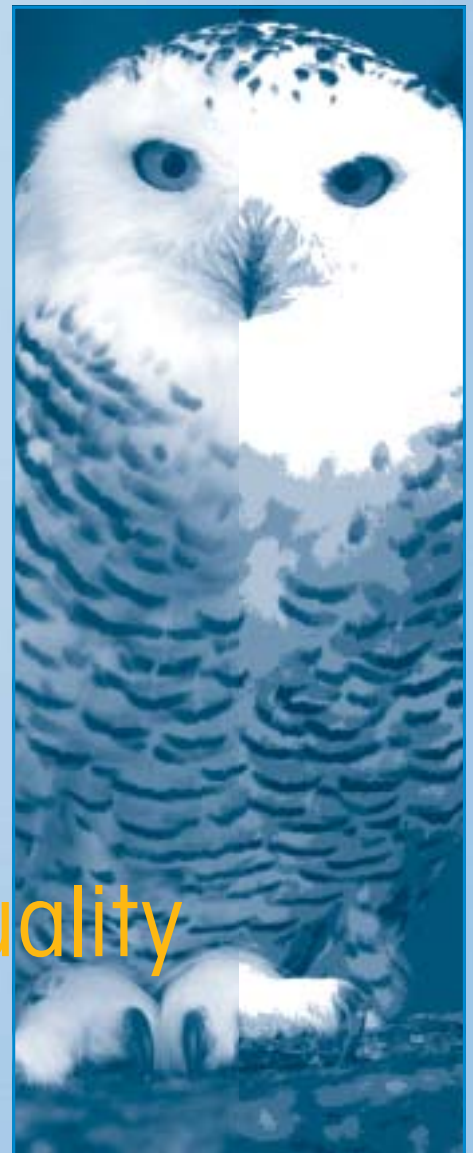
Printer accessible from any PC in your corporate network

→ **Compatibility**

Support for any Windows system and Mac OS (7.5.3 or later)

flexibility

convenience



quality

Enjoy more efficient faxing and better scanning

Despite the increasing use of e-mails in communicating with customers, no office or workgroup can afford to be without a fax machine. But as fewer documents are faxed these days, does a stand-alone fax machine still make business sense?

The new DiALTA Di251f and Di351f (with their standard fax function) are specifically designed to provide workgroups with efficient and economical faxing facilities. The fax function, which is part of the 5-in-1 office solution these machines provide, not only reduces hardware investment costs but also offers more sophisticated features such as faxing from books or A3 originals.

- **Higher speeds**
Fast one-touch dialling and parallel transmission to scan a new document while transmitting the last one
- **Large memory**
No documents lost even during simultaneous copying/printing
- **Versatility**
Documents, e.g. books and 3-D originals of up to A3 format, scanned in via the platen glass or document feeder
- **Ease of use**
Clearly arranged touch panel instead of innumerable keys
- **Image quality**
400 dpi and FineArt smoothing for 600 dpi-quality images and a choice of transmission modes for different kinds of originals

productivity

Why should anyone invest in a stand-alone scanner when the new Di251(f) and Di351(f) from Minolta are equipped with a laser scanner and automatic document feeder? Especially as these machines have much more to offer than your average flatbed scanner, e.g. automatic feed of up to 70 pages, as many as 35 pages (Di351f) scanned per minute and automatic scanning of documents printed on both sides. As networked multitasking machines, they also enable scanned documents to be archived or e-mailed – extremely useful in any workgroup environment.

→ **convenience**

→ **Speed**

Documents fed in at up to 35 pages per minute (Di351f), and individually scanned in approx. 0.6 sec.

→ **Versatility**

Originals, e.g. books and 3-D originals of up to A3 format, scanned in via the platen glass or document feeder

→ **flexibility**

→ **Scan manager**

Electronic document management made easier by Minolta's PageScope Cabinet software

→ **The flexibility factor**

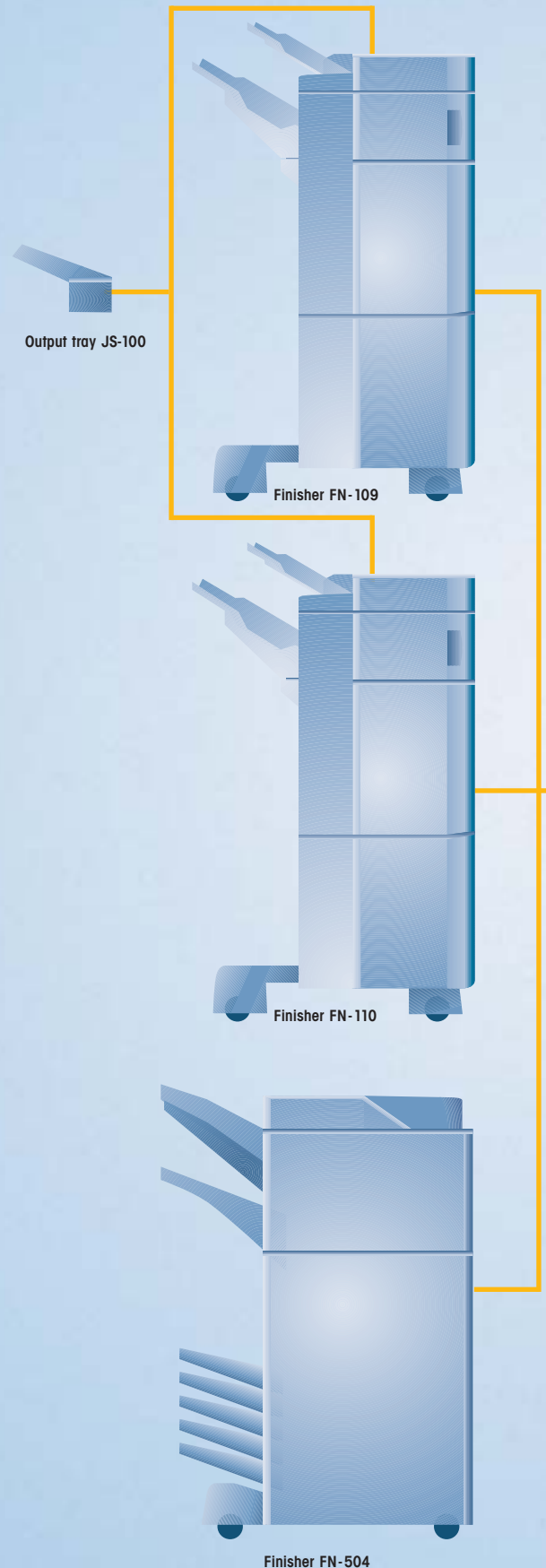
Scan-to-PC, scan-to-FTP and scan-to-e-mail

→ **Image quality**

High resolution (600 x 600 dpi) with a choice of scan modes for different kinds of originals

Choose the configuration you need

The new DiALTA Di251(f) and Di351(f) from Minolta come in a wide variety of configurations so your workgroup or office can choose precisely the machine it needs. This wide choice of customised configurations highlights the Minolta principle of putting the customer first: what you want is what you get. The diagram shows just how much choice you have with the Di251(f) and Di351(f) – and if you need any assistance in finding the right configuration, simply get in touch with your local Minolta representative.



Document feeder AF-9



Document feeder AFR-17



Platen cover



Offset tray OT-100



Job tray JS-200 / JS-201



Memory



Duplex unit
standard with D1351/f

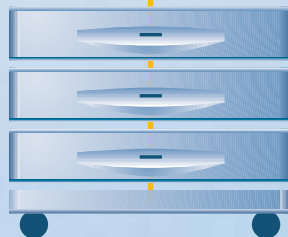


Controller PI3502



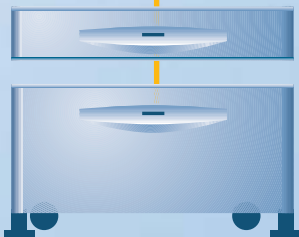
- NIC
- HDD
- Memory
- PS3 / scan kit

Universal cassette PF-118
or fixed cassette PF-119



Copier table CT-2

Universal cassette PF-118
or fixed cassette PF-119

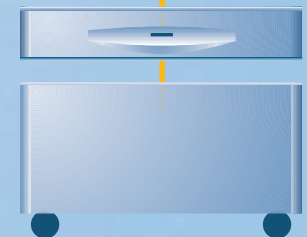


Large capacity cassette PF-117



Large desk

Universal cassette PF-118
or fixed cassette PF-119



Small desk